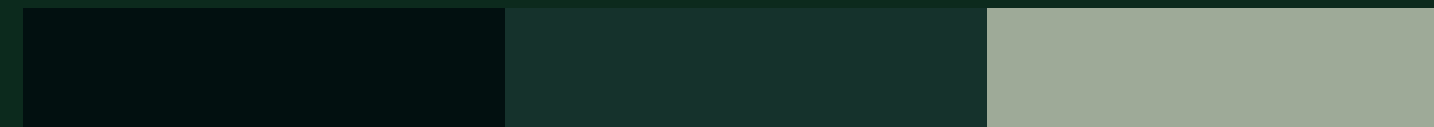


HINJAWADI CENTRAL



PROJECT BRIEF



* Only for internal training purposes

Contents

01

Overview

02

Location study

03

Master Plan

04

Floor Plans

05

Unit Plans

06

Price & Benefits



Overview

Introducing Hinjawadi Central
Where luxury meets convenience and community!
Here's why Hinjawadi Central is the talk of the town:

- Prime location in Hinjewadi, Pune's IT Hub.
- Stunning hill and city views.
- 12 towers spread across 13.5-acre land parcel.
- 25 Floors high rise towers.
- 35+ Lifestyle Amenities.
- Alu-Form Construction Technology(Mivan).
- Vastu-compliant, well-ventilated apartments.
- Abundant open spaces and amenities.
- Excellent connectivity with Dohler Metro station nearby.
- Best-in-class specifications for luxurious living.
- Proven history of faster construction timelines.



Hinjawadi Central -The Talk of the Town

Presenting our latest project nestled in the heart of Hinjewadi, Pune's vibrant IT Hub. Offering stunning vistas of rolling hills and the bustling cityscape, this 25-storey architectural marvel boasts expansive open spaces and amenities designed to enhance modern living. Our thoughtfully crafted apartments adhere to Vastu principles, ensuring optimal natural light and ventilation for a harmonious living experience. Inspired by the serene beauty of natural landscapes, our theme focuses on lush greenery and abundant recreational areas, providing residents with a tranquil oasis in the midst of urban life.



Conveniently situated within a 5-minute walk from the Dohler Metro station, our project offers unparalleled connectivity to neighboring cities and major highways, facilitating effortless commuting and travel. With a micromarket price growth of 10% annually, investing in this prime location promises not only a luxurious lifestyle but also substantial returns. Welcome to a sanctuary where comfort, convenience, and investment potential converge seamlessly.

Why choose Hinjawadi Central?



Metro Access

Dohler Metro Station at 2 mins walking distance.



IT & Tech Hub

Located at the heart of Hinjewadi ensuring exponential growth



Scenic hill view

Beautiful hill views and open green spaces from the project



Connectivity & Infra

Strategic connectivity to the Highway, major cities and infra.

Why choose Hinjawadi Central?



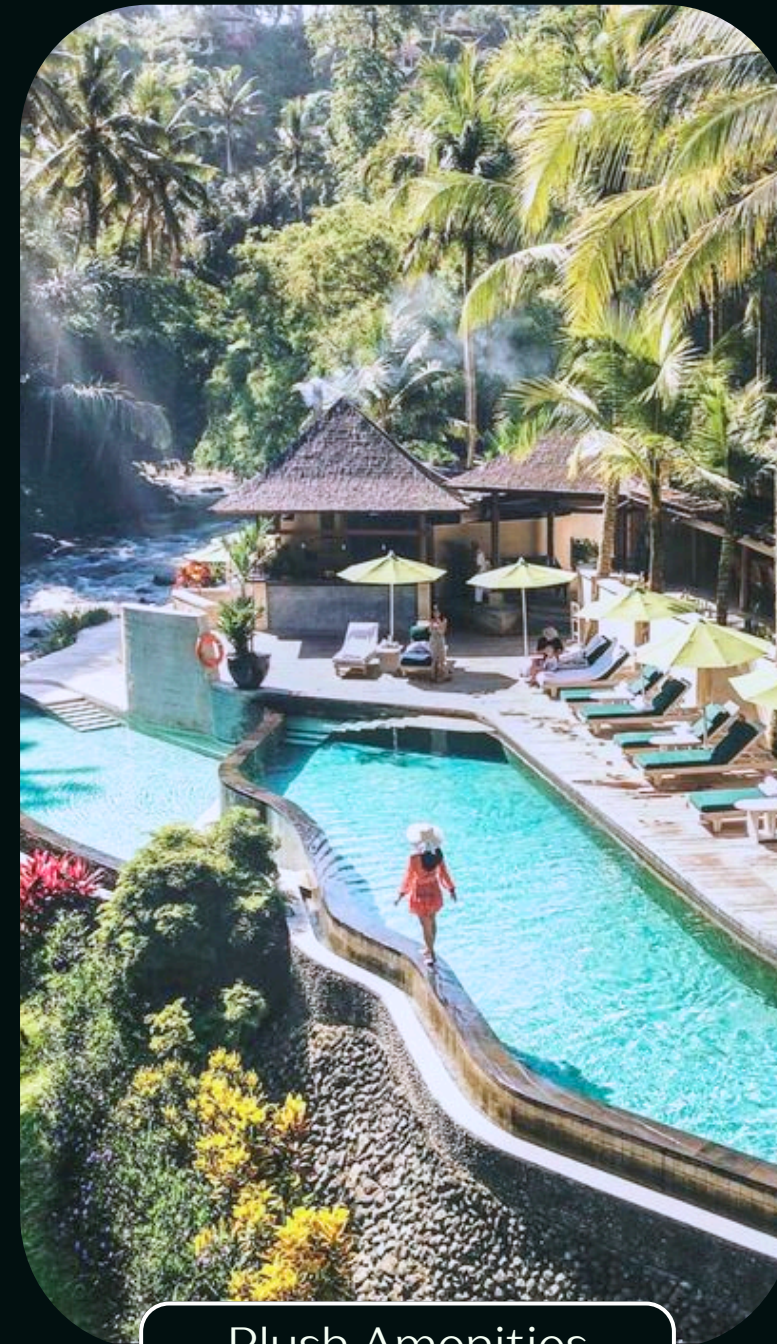
Serene landscapes

Breathtaking landscapes designed with meadows and spacious parks



Strategic Layouts

Designed for more space, utility, ventilation and natural light.



Plush Amenities

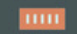


Resort themed, best in class amenities for a grand lifestyle.



Lavish Fittings

Experience premium Specifications, finishes and fittings.

Location study

-  Metro Route 3
Shivaji Nagar to Megapolis Circle
-  Mumbai-Pune Highway
-  Metro Stations





Master Layout Floor Plans Unit Plans

Master plan





Amenity plan

3BHK-Luxurious-A

2 BHK - A

2 BHK - A

3BHK-Premium - B



3BHK-Luxurious-A

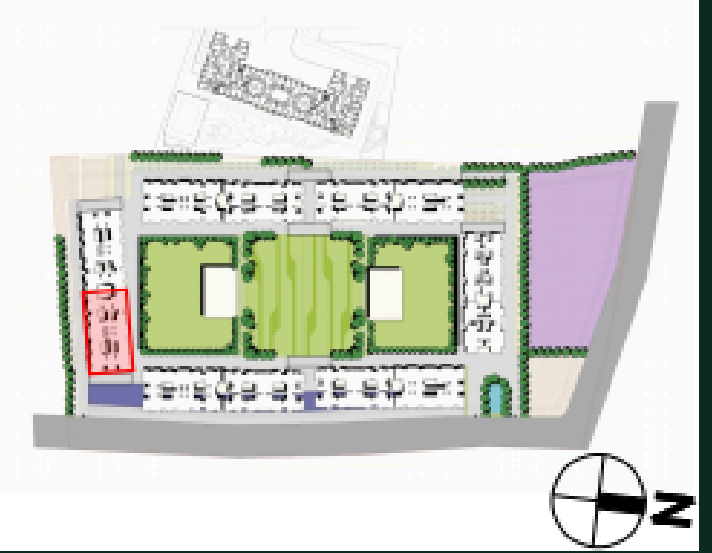
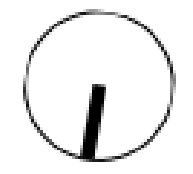
2 BHK - B

2 BHK - B

3BHK-Premium - B1

Tower 1

Floor plan



3BHK-Premium - B

2 BHK - A

2 BHK - A

3BHK-Luxurious-A



3BHK-Premium - B1

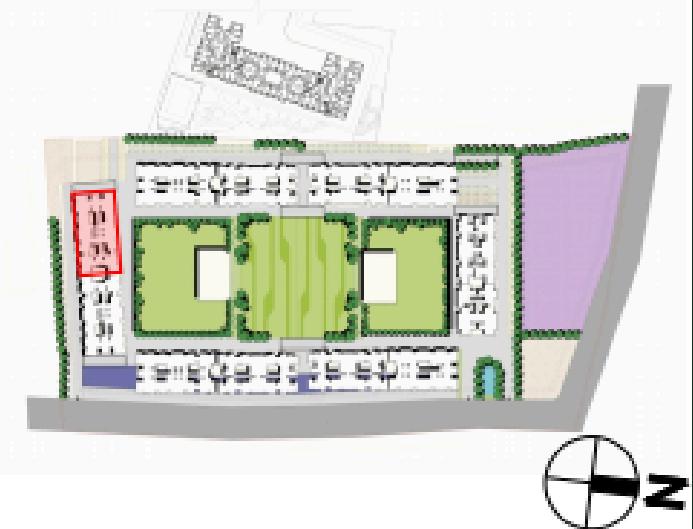
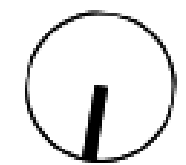
2 BHK - B

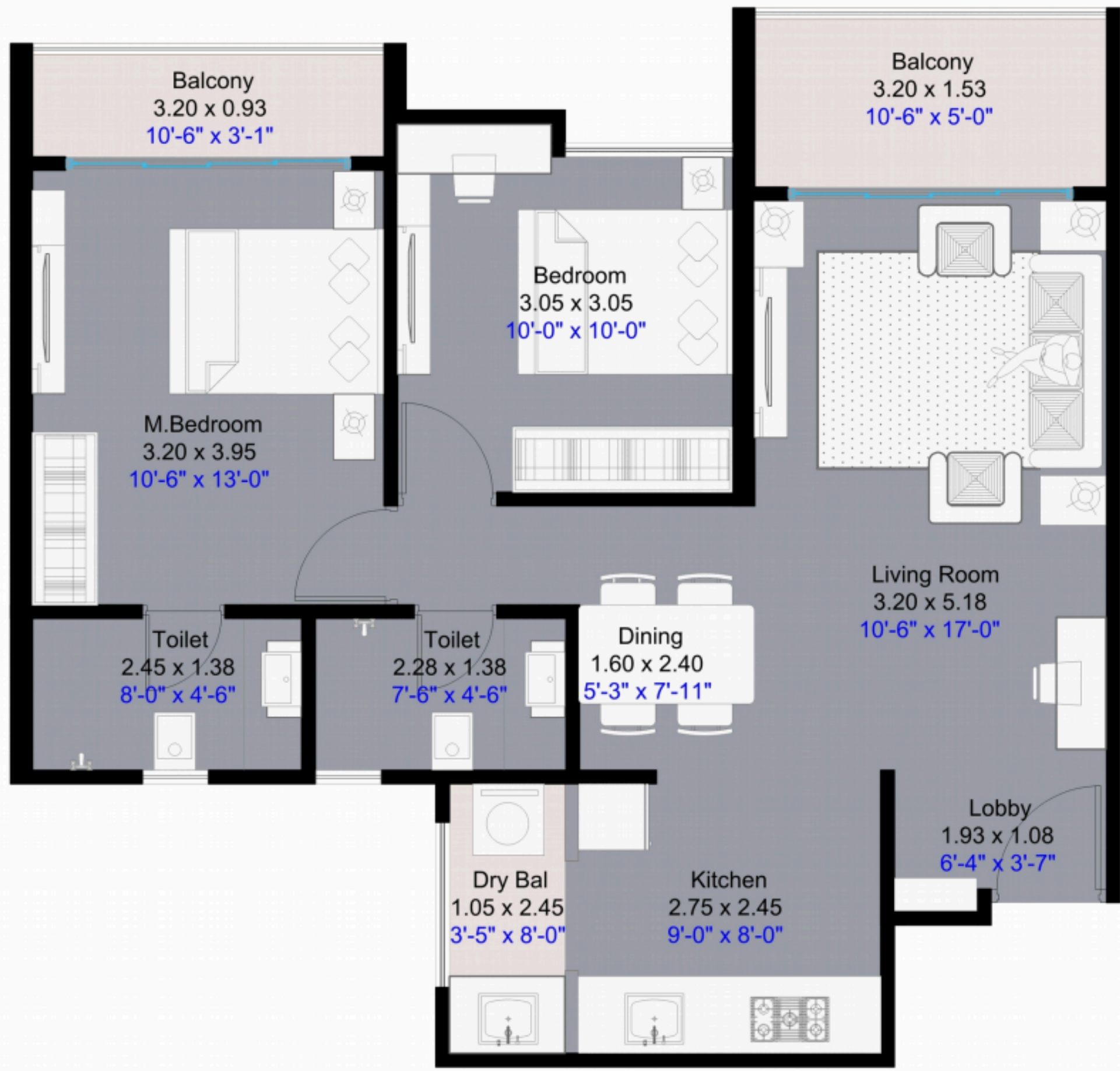
2 BHK - B

3BHK-Luxurious-A

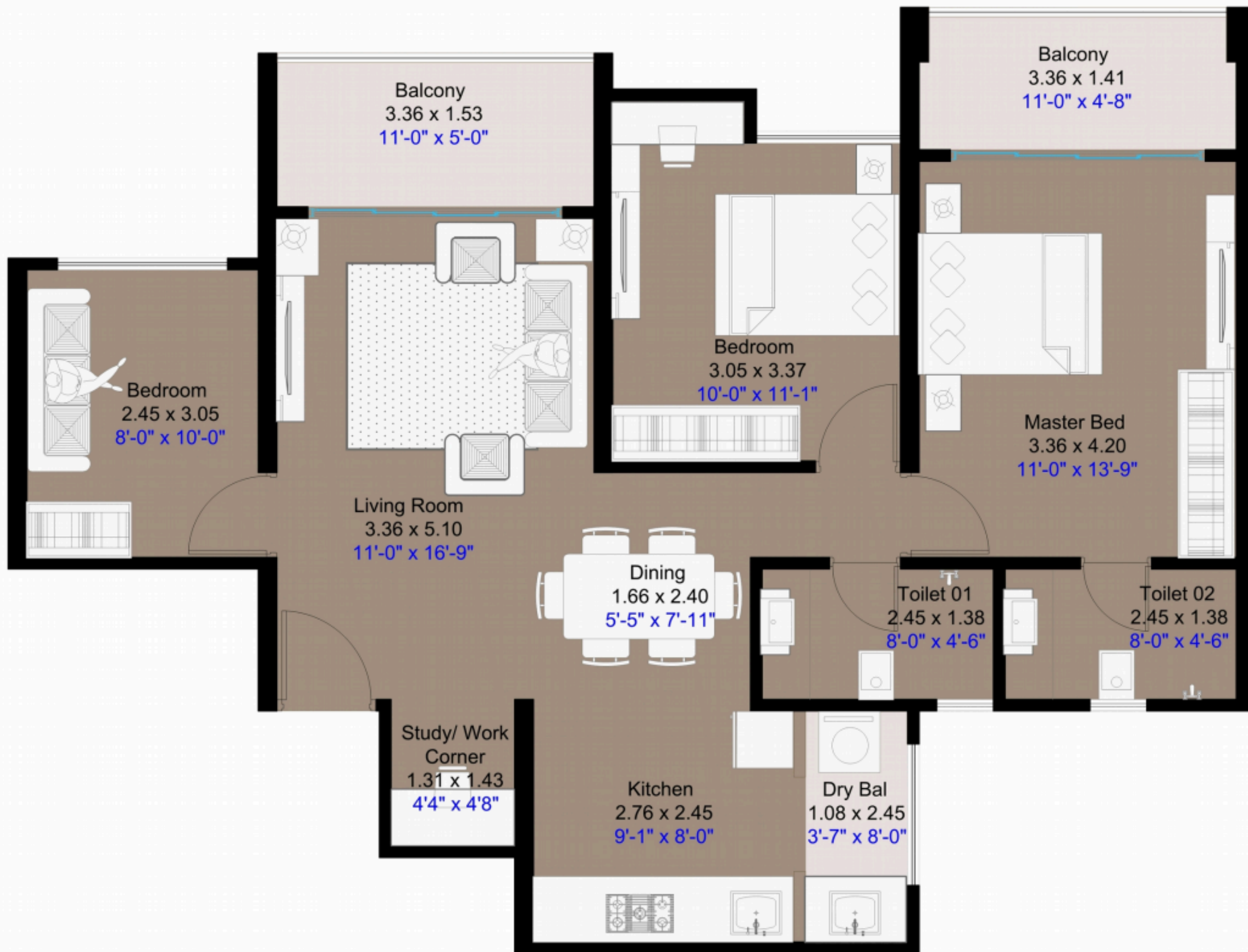
Tower 2

Floor plan



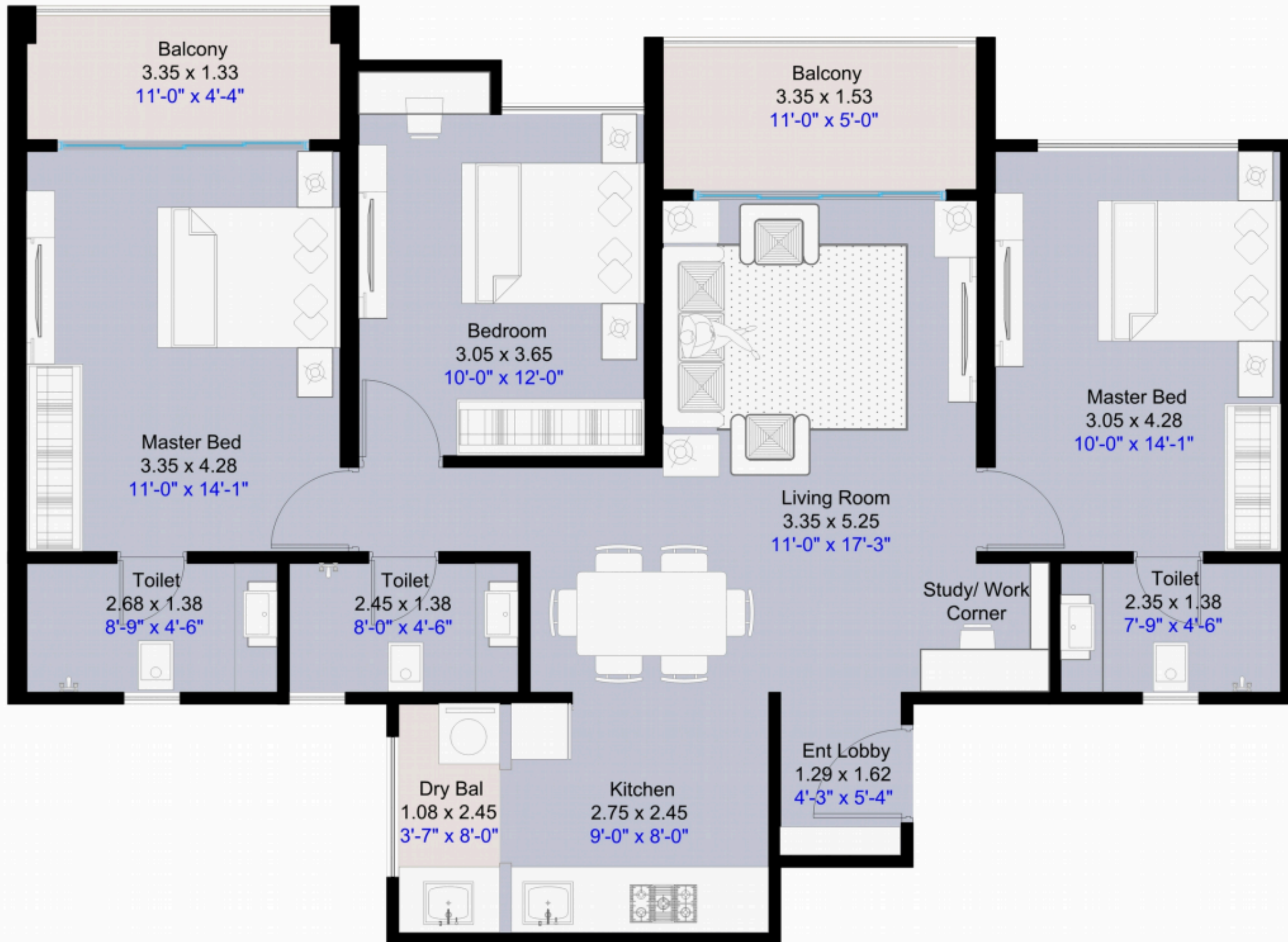


2BHK
CARPET AREA:
803 SQ.FT.



3BHK PREMIUM

CARPET AREA:
955 SQ.FT.

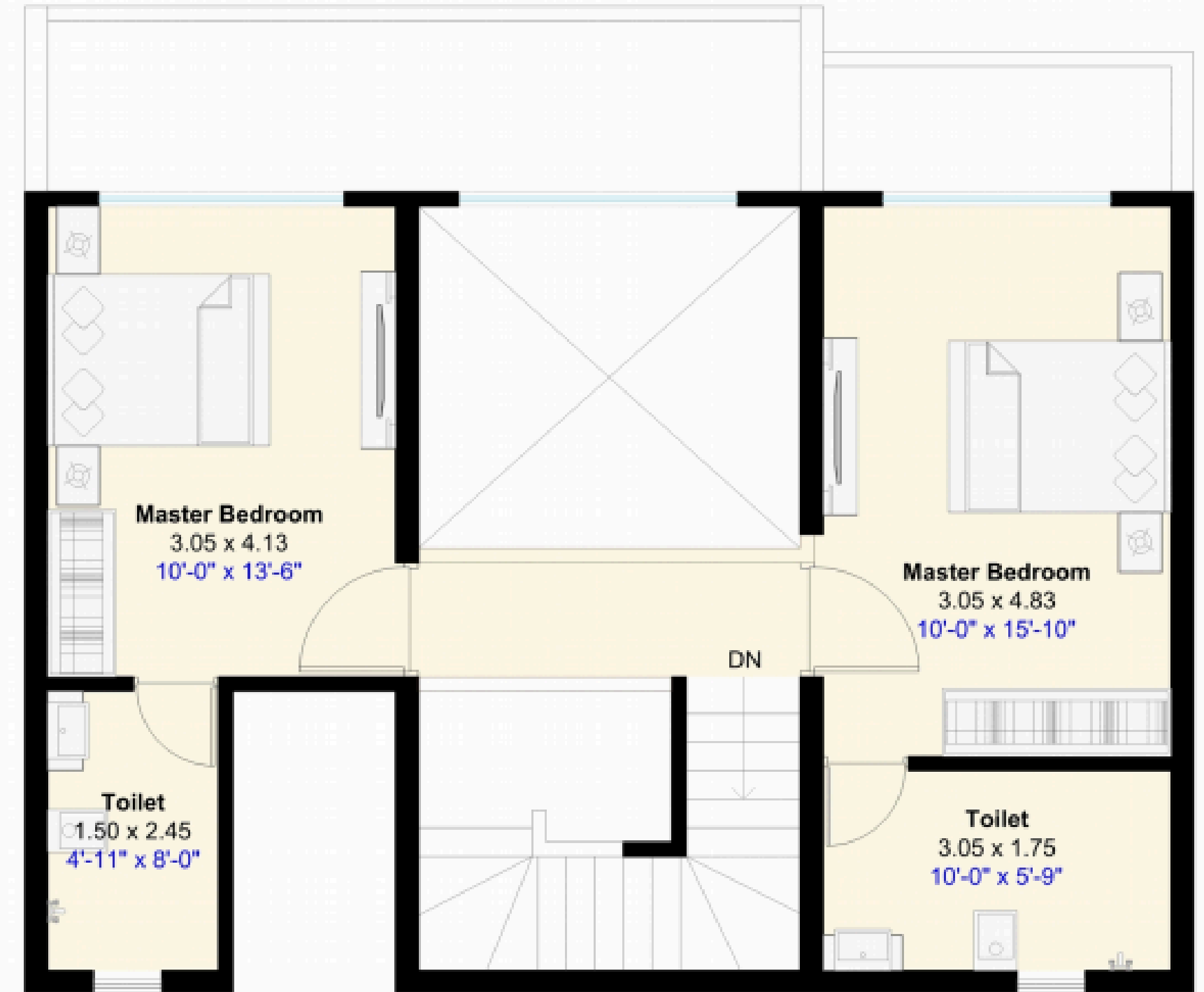
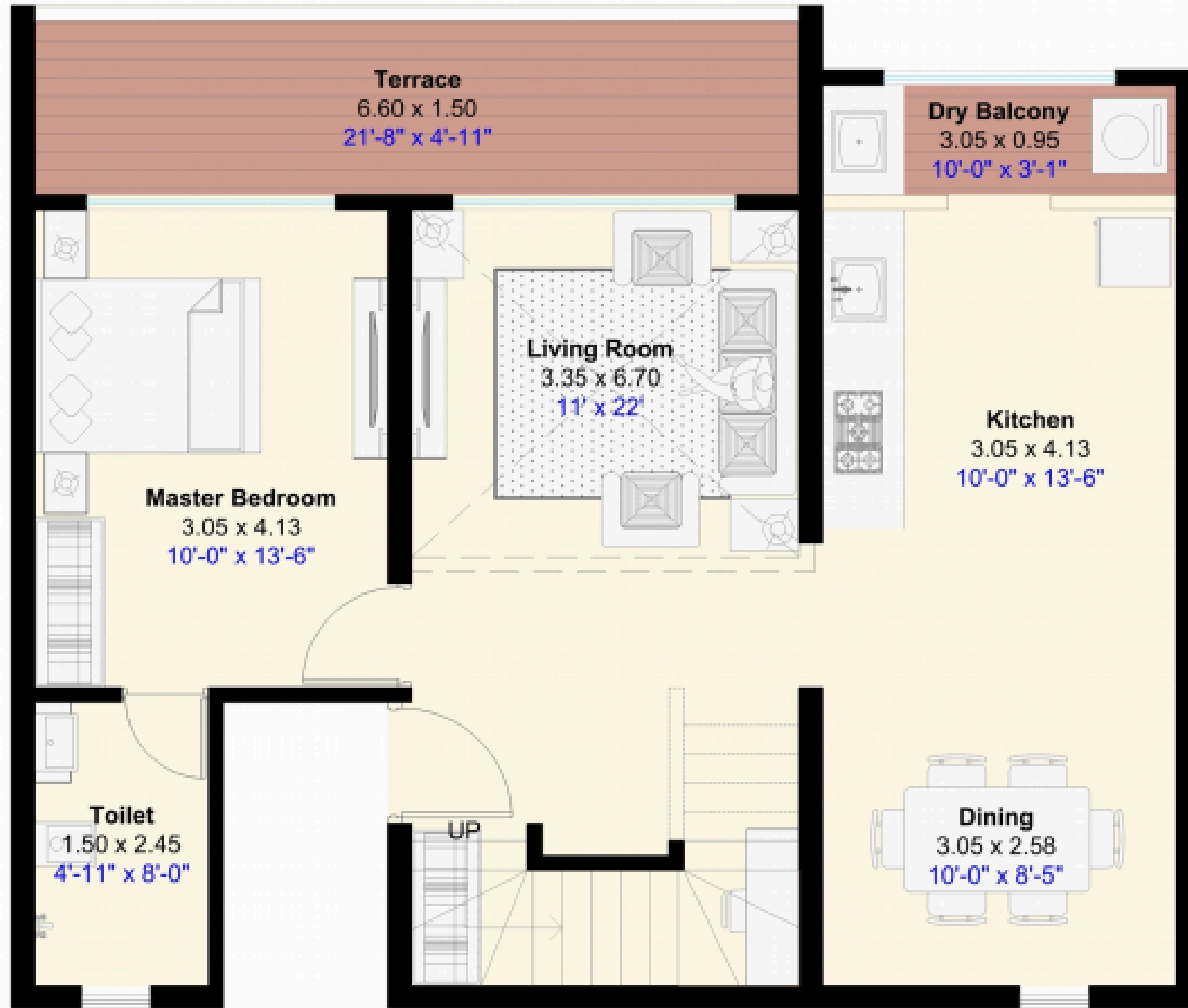


3BHK

LUXURY

CARPET AREA:

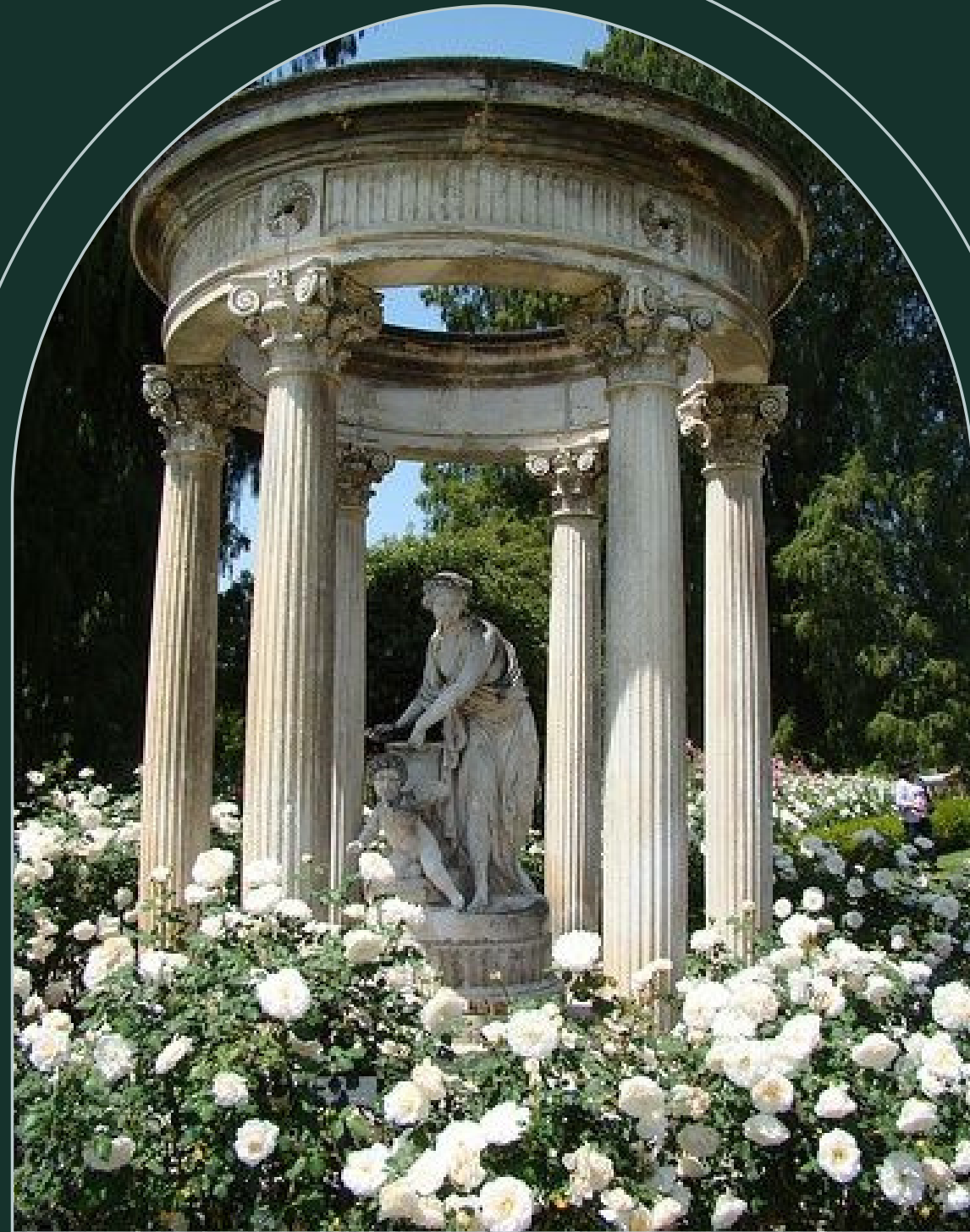
1087 SQ.FT.



3BHK DUPLICATE

CARPET AREA:
1276 SQ.FT.

Price Details



Type	Carpet (sq.ft)	Maximum Price (All Inclusive)
2BHK	803	84.90 L
3BHK - P	955	1.01 Cr
3BHK - L	1087	1.15 Cr
3BHK - L Duplex	1276	1.48 Cr

Token Benefits

Token Type	Gold	Platinum
Token Amount	51,000/- (Refundable)	1,50,000/- (Non - Refundable)
Token Benefit	50,000/-	1,50,000/-
Spot Benefit	50,000/-	1,00,000/-
Completion of 5% & SDR (On Allotment day)	50,000/-	50,000/-
Early Bird Offer	50,000/-	50,000/-



Confirmed Covered Car Park

Priority Inventory Access

*T&C APPLY

*PLATINUM BENEFITS ONLY FOR FIRST 500 CLIENTS



THANK YOU!

Take the leap, embrace luxury living with exclusive benefits. Your time is now!

